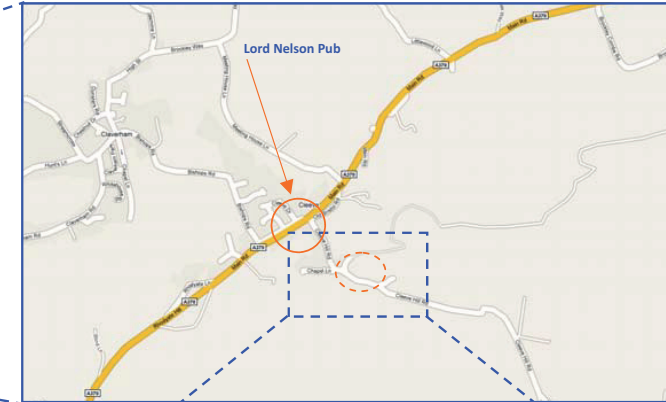


The nearest postcode for GPS is BS49 4PQ



Directions to Goblin Combe from M5 J21

- Follow signs to Bristol along the A370
- At Congresbury traffic lights continue towards Bristol
- In Cleve Village you will see the Lord Nelson Pub on your right
- Immediately after the pub take a right turn on to Cleve Hill Road
- Shortly after a turning on the left (don't take) there is a car park on the left

Directions to Goblin Combe from A38

- Follow signs for Bristol airport
- At the northern end of the airport turn off the A38 towards Backwell
- That the end of this road turn left along the A370 towards Weston-s-mare
- As you enter Cleve Village slow and turn left just before the Lord Nelson Pub, also on the left.
- Shortly after a turning on the left (don't take) there is a car park on the left